

PART OF S.E. 1/4 OF N.E. 1/4
SECTION 20, T.6N., R.1W., S.L.B. & M.

110-2

IN OGDEN CITY

TAXING UNIT: 25

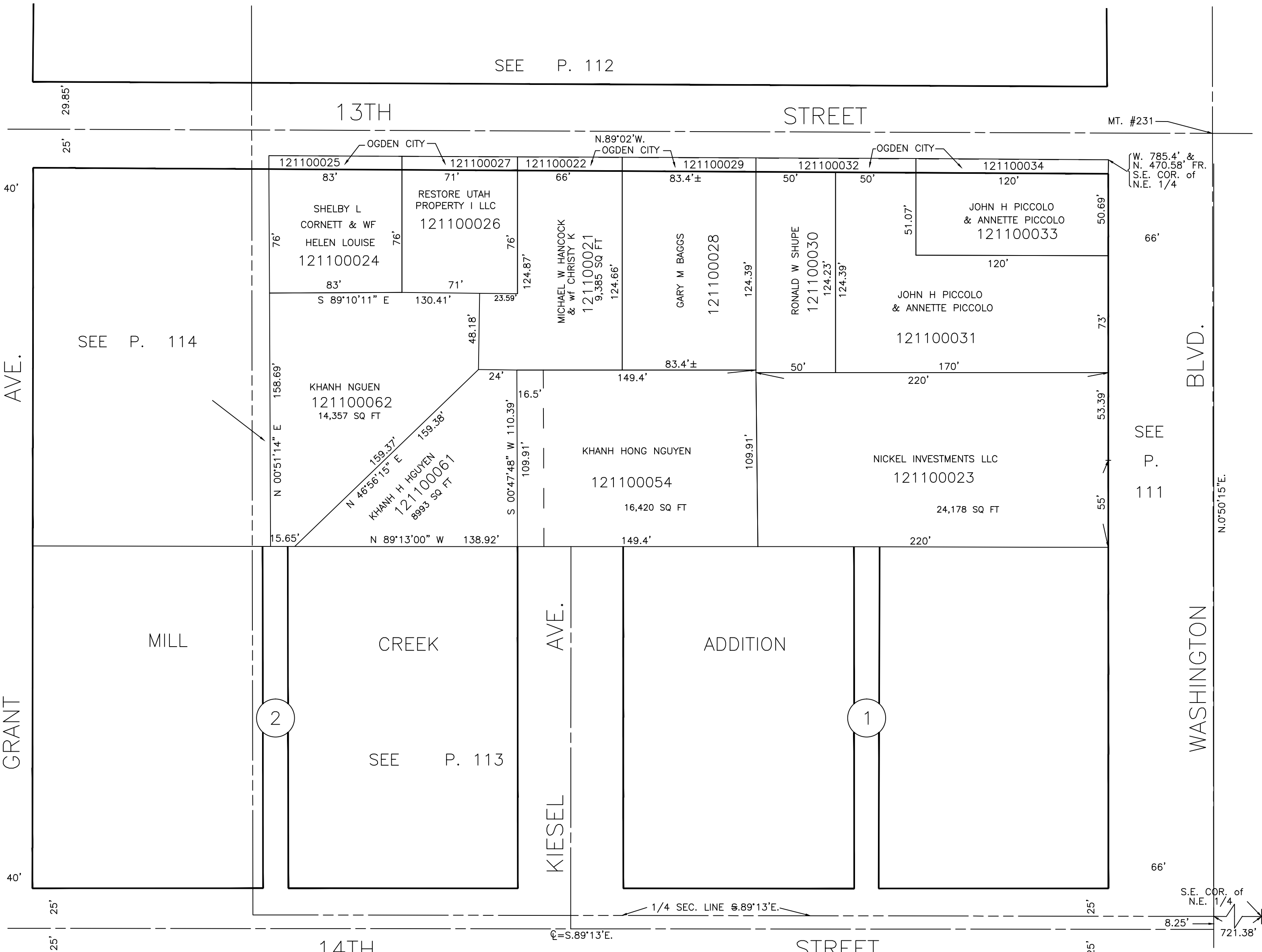
SCALE 1" = 50'

SEE P. 112

13TH

STREET

MT. #231



SEE P. 114

(W. 785.4' &
N. 470.58' FR.
S.E. COR. of
N.E. 1/4

BLVD.

SEE
P.
111

N.0°50'15"E.

WASHINGTON

MILL

CREEK

AVE.

ADDITION

2

1

SEE P. 113

1/4 SEC. LINE S.89°13'E.

S.89°13'E.

14TH

STREET

SEE BOOK 3, P. 25

S.E. COR. of
N.E. 1/4
8.25' 721.38'